
ETS 2.0 Installation Guide



Table of Contents

INTRODUCTION	1
1.1 ABOUT THIS GUIDE	1
1.2 DOWNLOADING ETS.....	1
1.3 FEATURE MATRIX.....	2
INSTALLING ETS	3
2.1 SYSTEM REQUIREMENTS	3
2.1 INSTALLING THE DOWNLOADABLE VERSION OF ETS.	3
2.2 INSTALLING THE CD VERSION OF ETS.....	3
GETTING STARTED.....	4
3.1 OPENING ETS FOR THE FIRST TIME	4
3.2 TO RUN ETS 2.0 IN DEMO MODE.	5
3.3 TO RUN ETS 2.0 IN FULL MODE.....	5
3.3.1 <i>Unlocking ETS 2.0</i>	5
3.4 ENTERING FILE PATHS.....	6
3.4.1 <i>Single User</i>	6
3.4.2 <i>Multi User</i>	6
UPGRADING	8
4.1 UPGRADING FROM ETS VERSION 1.0	8
4.1.1 <i>Importing existing ETS 1.0 data into ETS 2.0 database</i>	8
4.2 UPGRADING ETS 2.0 WITH THE LATEST VERSION.	10
TECHNICAL SUPPORT	11
5.1 TROUBLESHOOTING ETS 2.0 INITIAL RUN.....	11
5.1.1 <i>I lost the license key. What do I do now?</i>	11
5.1.2 <i>I can't get ETS 2.0 to accept my license key.</i>	11
5.2 CONTACT.....	11

1

Introduction

1.1 About This Guide

This guide provides instructions for downloading and installing ETS (Expert Training System) version 2.0. This guide is for our customers who have purchased ETS 2.0 license and for our customers who are evaluating the product before making the purchase. This guide assumes that you have a basic understanding of Windows operating systems.

ETS 2.0 is available in CD format and downloadable format. We recommend our customer to visit the download page frequently to get the latest version of ETS 2.0. Please go to http://www.karta.com/products_ETS_download.asp to get the latest version and to view the version history. You will have to contact Karta Technologies, Inc. to obtain ETS 2.0 in CD format and we will mail you a CD copy of ETS 2.0.

1.2 Downloading ETS

We are providing our potential customers with downloadable version of ETS to evaluate the product before making the purchase. This will help our customers to find out if our product will provide them with the solution they are looking for. ETS can be downloaded by visiting http://www.karta.com/products_ETS_download.asp.

1.3 Feature Matrix

	Demo	Single User	Multi User
Import Question Banks	No	Yes	Yes
Number of Users	3	Unlimited	Unlimited
Number of Question Banks	3	Unlimited	Unlimited
Number of Tests	3	Unlimited	Unlimited
Concurrent Log On	No	No	Yes

2

Installing ETS

2.1 System Requirements

This section lists the system requirements for the ETS 2.0.

System Component	Minimum Requirement
Operating System	Windows 2000 SP4 Windows XP SP2
Hardware	Pentium II, 300 MHz or faster
Disk Space	30 MB
RAM	128 MB

2.1 Installing the downloadable version of ETS.

1. Download the latest version of ETS 2.0
2. Extract the **Setup.exe** file from the zip file (e.g. ETS2_0_15_Setup.zip)
3. Double-click **Setup.exe**
4. Click through the standard Windows installation dialogs for **Welcome, Customer Information, and Ready to Install the Program.**

2.2 Installing the CD version of ETS.

1. Insert ETS 2.0 CD into your CD/DVD drive. InstallShield will launch automatically once the CD is accepted by Windows.
2. Click through the standard Windows installation dialogs for **Welcome, Customer Information, and Ready to Install the Program.**

3

Getting Started

3.1 Opening ETS for the first time

The installation procedure will create a shortcut link (“ETS for Windows”) on your desktop upon completion. Simply double-click on the link to run ETS.

Another option is to run ETS program as follows:

Start > (All) Programs -> ETS for Windows

You will be presented with the “Enter Serial Number” Windows dialog as shown below.

Enter Serial Number

Program Registration

If you have a serial number, enter it below. If you do not have a serial number, leave the field below blank to run Expert Training System in demo mode.

Name:

Company:

Enter Serial Number:

Type: -

Demo OK Cancel

Figure 3-1

3.2 To Run ETS 2.0 in Demo Mode.

The demo version limits some functionality offered by ETS 2.0. Please refer to section 1.3 **Feature Matrix** to see the limitations.

If you are evaluating ETS 2.0, click on the **Demo** button as shown in **Figure 3-1**. Then proceed

3.3 To Run ETS 2.0 in Full Mode

You need to provide ETS 2.0 with a valid key to unlock the program. A valid key will be provided by Karta Technologies, Inc. when you purchase a license. For more information please go to <http://www.karta.com> and contact our Sales representative. In order to generate a unique key, you must provide your full name along with your company name because the key is generated based on this information. Karta Technologies, Inc. will include the name and the company name you provided along with the key generated in the sales receipt or email.

3.3.1 Unlocking ETS 2.0

As mentioned in previous section, you will need all three information to unlock ETS 2.0. Enter the combination exactly as they appear in the receipt or in the email. When a correct combination is provided, ETS 2.0 will show the type of license you purchased and the **OK button** is enabled (see **Figure 3-2**). For this example, the email or the receipt should look like this:

```
Name      : John Doe
Company   : Some Company
Serial    : 7D148C820E
```

Note: We recommend to copy-and-paste this combination into the corresponding fields.

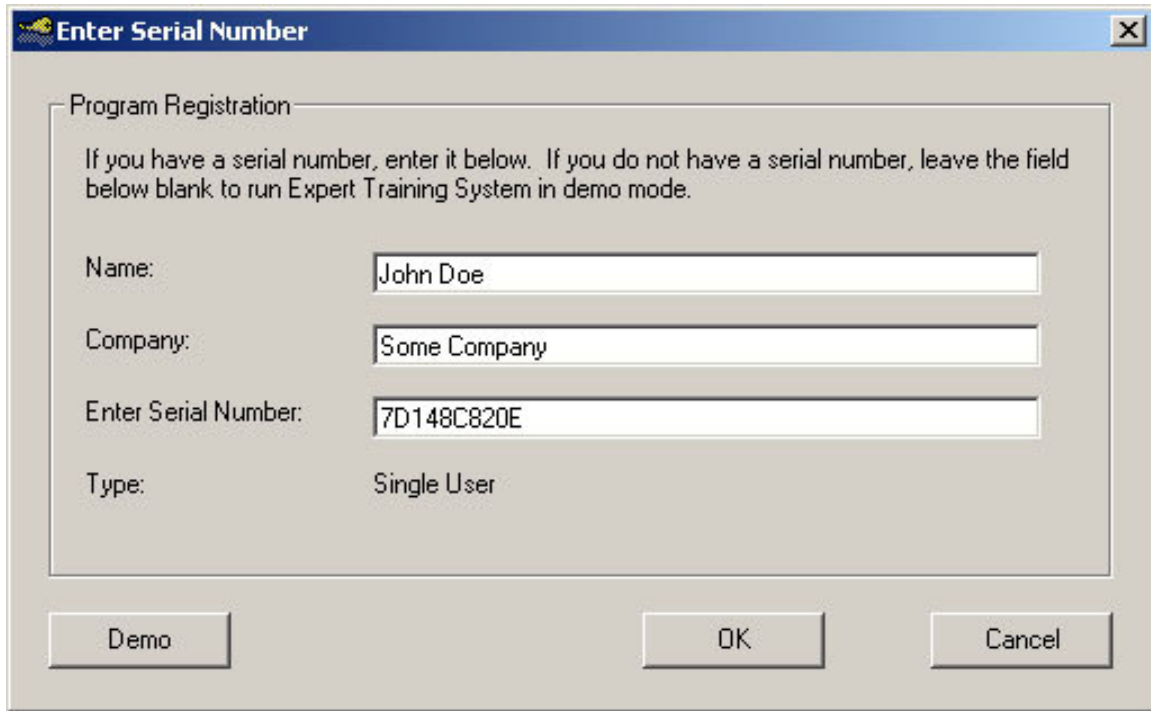


Figure 3-2

3.4 Entering File Paths

3.4.1 Single User

ETS 2.0 will provide you with the default location of the database directory, the backup directory and the images directory. If you are using ETS 2.0 on a standalone computer or if you are evaluating ETS 2.0, leave the default values and click on **OK** button. (see **Figure 3-3**)

3.4.2 Multi User

If you are using ETS on multiple workstations and would like to share the same data, please create shared network folders and specify the network paths where you will be storing the network database, the network backup directory and the network images directory. (see **Figure 3-4**)

These directories must have **full permission** to all users who will be accessing ETS 2.0 data. Please consult with your network administrator on how to set up the network settings properly.

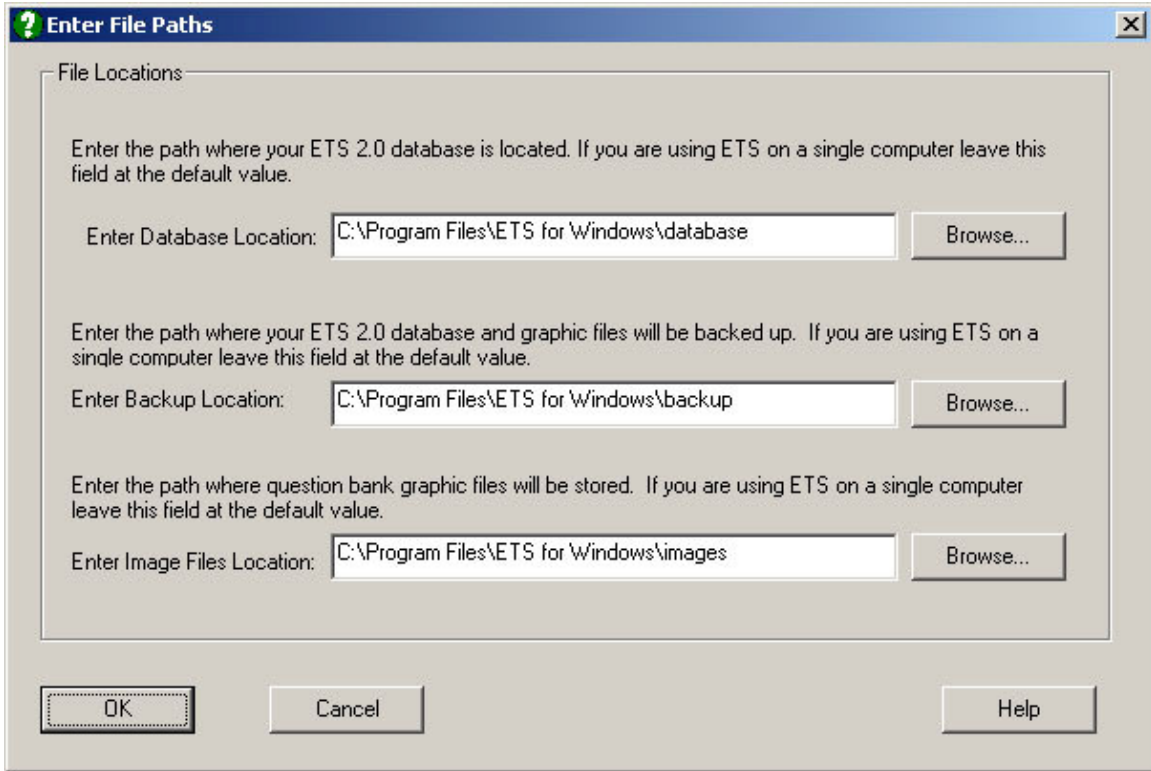


Figure 3-3

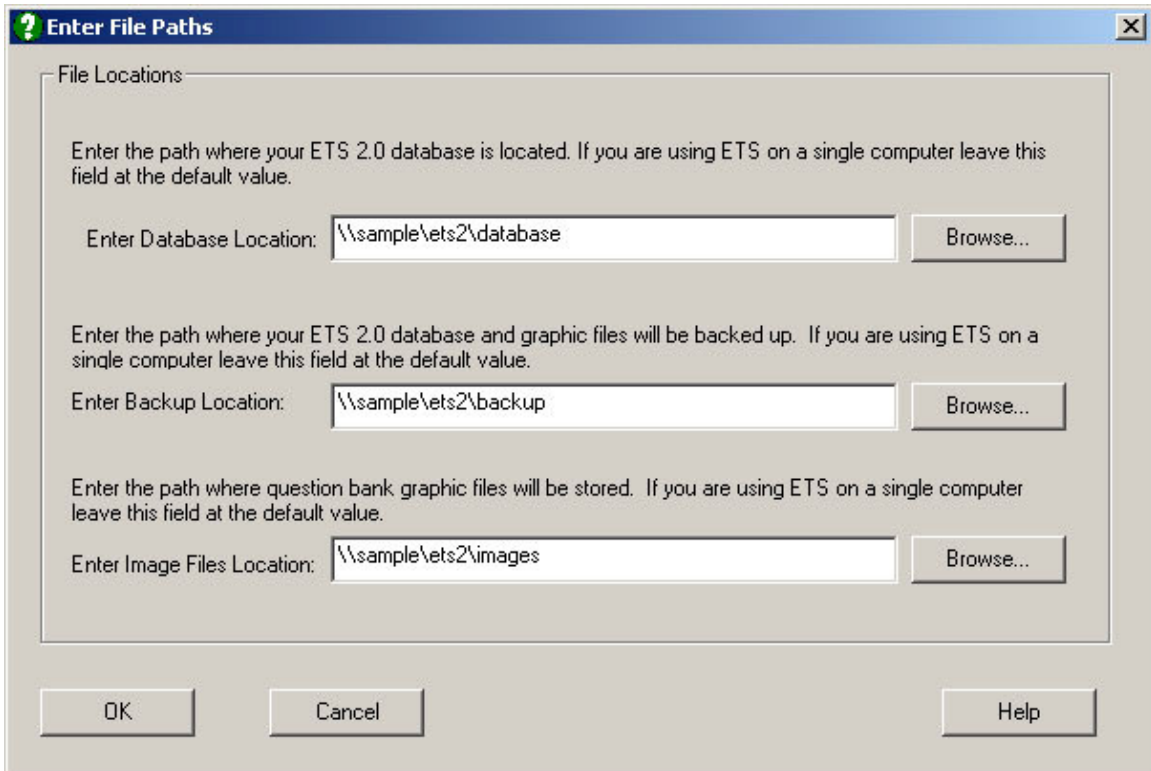


Figure 3-4

4

Upgrading

4.1 Upgrading from ETS version 1.0

It is important for upgrading users to follow these steps to import your users, tests, and questions data from your existing ETS 1.0 database. We have created a small utility called **ETSImport** that will import ETS 1.0 data into ETS 2.0 database. It is highly recommended to run this utility prior using ETS 2.0 program after the installation.

4.1.1 Importing existing ETS 1.0 data into ETS 2.0 database.

1. Browse into your CD/DVD drive and double-click on **ETSImport.exe** file to start the utility. This utility can also be found in the ETS 2.0 Installation Folder. (C:\Program Files\ETS for Windows\ETSImport.exe)
2. Enter the database location in the **ETS 1.0 Access Database Location** text box OR use the **Browse** button to locate the **ETSDB.MDB** database on your computer's hard drive. (see **Figure 4-1**)
3. Enter the database location in the **ETS 2.0 Access Database Location** text box OR use the **Browse** button to locate the **ets2db.mdb** database on your computer's hard drive. (see **Figure 4-1**)
4. Click the **Import** button. Upon successful completion of the import, the number of users, questions, and tests imported will be displayed. (see **Figure 4-2**)

*Note: Do **NOT** run the import utility after you have entered new information into ETS 2.0. Only use the import utility immediately after the initial installation.*

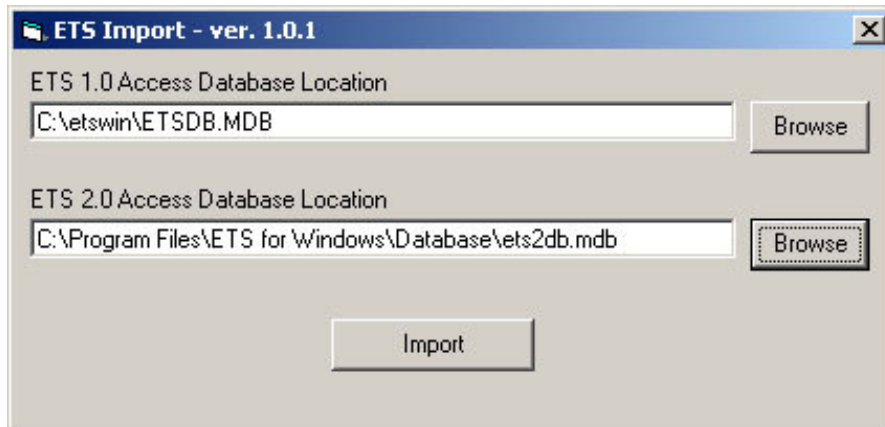


Figure 4-1

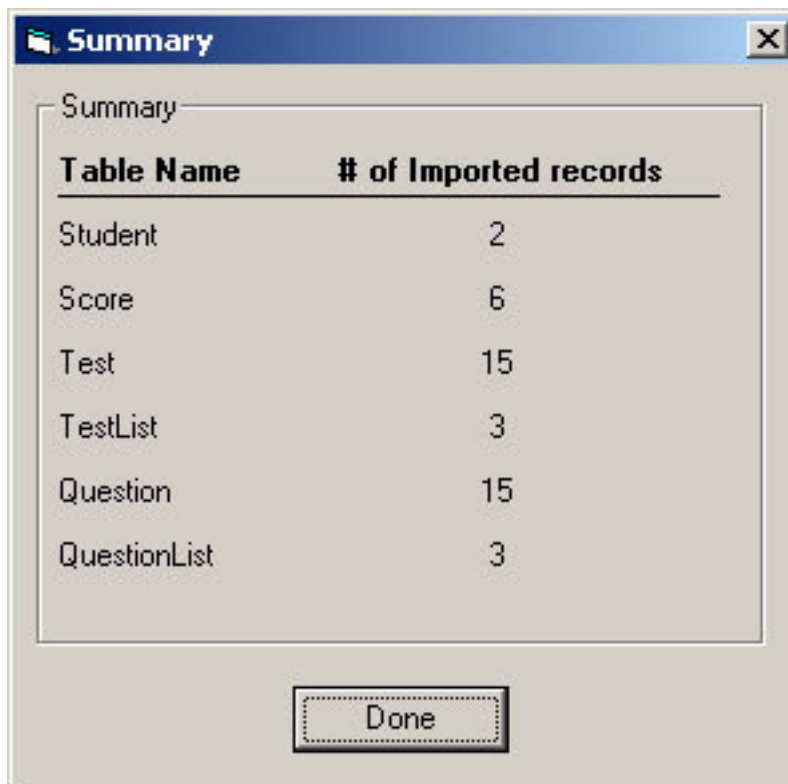


Figure 4-2

4.2 Upgrading ETS 2.0 with the latest version.

Please check our website frequently to get the latest version of ETS 2.0. To upgrade simply uninstall previously installed ETS 2.0 and reinstall ETS 2.0 with the new version.

5

Technical Support

5.1 Troubleshooting ETS 2.0 Initial Run

5.1.1 I lost the license key. What do I do now?

We keep all the license keys in our database. Please provide our sales representative with your name and company name; we will retrieve your license key from the database and send it to you. In the case that we are unable to find your information in our database, we will generate a new license key for you. We require our customer to show us a valid proof of purchase before we can generate a new license key.

5.1.2 I can't get ETS 2.0 to accept my license key.

The license info is case sensitive. We recommend our customer to copy-and-paste the data into ETS 2.0 to eliminate possible typos. If the problem still persists, please contact our sales representative to provide you with a new license key.

5.2 Contact

Web:	http://www.karta.com
Sales:	etssales@karta.com
Support:	etssupport@karta.com
Phone:	210.582.3000
Fax:	210.582.3002
Toll Free:	800.725.2782
